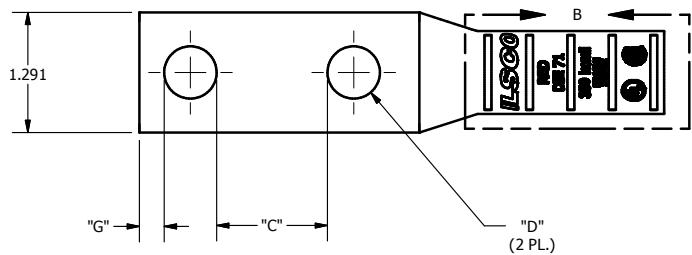


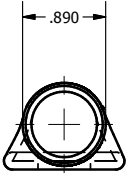
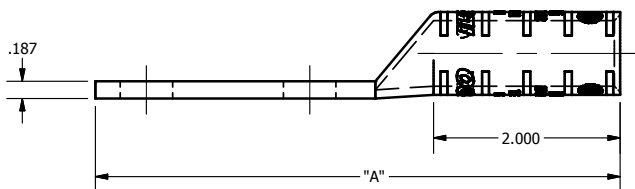
SCREW: NONE	MATERIAL: COPPER	REV: I
CAT. NO.: SEE CHART	PLATING: EL-TIN	DRAWN BY:DW
INFORMATION SHEET:FORM 157	MARKING: SEE CHART	SCALE: NTS
		DATE:7/5/2007
		SIZE: B

ILSCO
connections matter

DWG NO: **Y1303-D**
SHEET: 1 OF 1



DETAIL B
TOP AND BOTTOM INK MARKINGS ARE IDENTICAL
INK COLOR: RED
PER SPEC #: F921



Catalog Number	"A"	"C"	"D"	"G"	TANG MARKING
CLND-350-14-12	3.873	0.219	0.281	0.180	
CLND-350-14-58	4.060	0.344	0.281	0.180	
CLND-350-14-34	4.060	0.469	0.281	0.180	ILSCO, CLND-350-14-34, 1/4 X 3/4, 350kcmil, 250 IKM/262 FLEX, DIE 71, UL, CSA
CLND-350-14-1	4.310	0.719	0.281	0.180	
CLND-350-516-58	4.060	0.282	0.343	0.180	
CLND-350-516-34	4.310	0.407	0.343	0.180	
CLND-350-516-78	4.310	0.532	0.343	0.180	
CLND-350-516-1	4.560	0.657	0.343	0.180	
CLND-350-516-134	5.123	1.407	0.343	0.180	ILSCO, CLND-350-516-134, 5/16 X 1 3/4, 350 kcmil, 250 IKM / 262 FLEX, DIE 71, UL, CSA
CLND-350-38-34	4.310	0.344	0.406	0.211	
CLND-350-38-78	4.560	0.469	0.406	0.211	
CLND-350-38-1	4.560	0.594	0.406	0.211	ILSCO, C-350-38-1, 3/8 X 1, 350 kcmil, 250 IKM / 262 FLEX, DIE 71, UL, CSA
CLND-350-38-116	4.560	0.656	0.406	0.211	
CLND-350-38-118	4.748	0.719	0.406	0.211	
CLND-350-38-134	5.248	1.344	0.406	0.211	ILSCO, C-350-38-134, 3/8 X 1-3/4, 350 kcmil, 250 IKM / 262 FLEX, DIE 71, UL, CSA
CLND-350-38-2	5.623	1.594	0.406	0.211	
CLND-350-12-1	4.748	0.438	0.562	0.265	ILSCO, CLND-350-12-1, 1/2 X 1, 350 kcmil, 250 IKM / 262 FLEX, DIE 71, UL, CSA
CLND-350-12-114	5.123	0.688	0.562	0.265	ILSCO, CLND-350-12-114, 1/2 X 1-1/4, 350 kcmil, 250 IKM / 262 FLEX, DIE 71, UL, CSA
CLND-350-12-112	5.248	0.938	0.562	0.265	
CLND-350-12-134	5.623	1.188	0.562	0.265	ILSCO, CLND-350-12-134, 1/2 X 1-3/4, 350 kcmil, 250 IKM / 262 FLEX, DIE 71, UL, CSA
CLND-350-12-178	5.623	1.313	0.562	0.265	

THE INFORMATION CONTAINED WITHIN THIS DOCUMENT IS PROPRIETARY TO ILSICO AND MAY NOT BE DISCLOSED WITHOUT PRIOR WRITTEN CONSENT